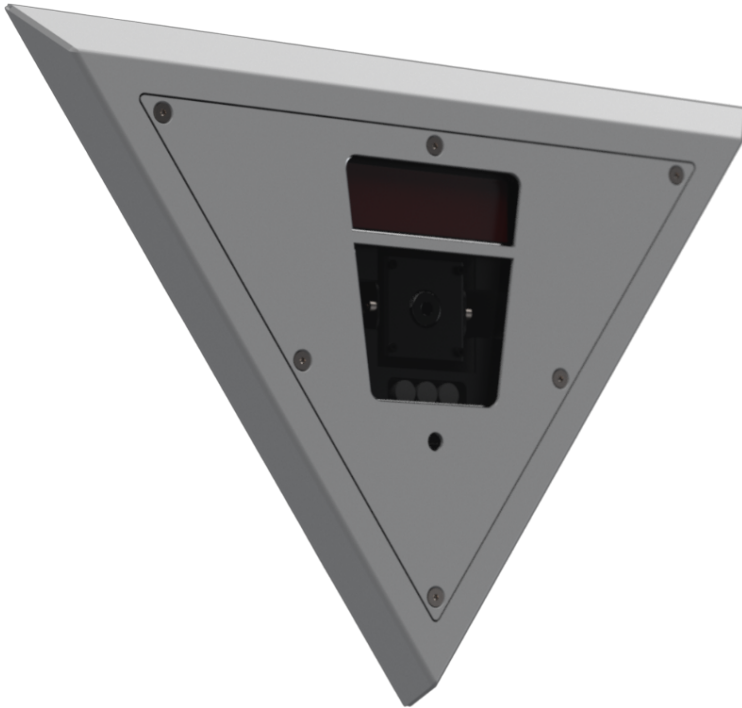


Key Features

- Anti-Ligature Design
- High-Resolution Analogue Camera
- Wide-Angle Lens
- Audio
- Designed for Maximum Room Coverage
- Meets Standards for Safer Cells
- UK Design & Manufacture
- Integrated IR LEDs (940nm)
- Integrated microphones
- IK10 vandal resistance



The CMD4 is the next generation of one of the most recognisable cameras in the global custody and high-security market.

The flush mounting camera module eliminates anti-ligature points, making it ideal for estates with the most significant of challenges. Manufactured from steel and hard coated polycarbonate also means it is resistant to physical attack and will still remain operational.

The original two-piece mounting solution has been retained, a critical feature for installation in demanding environments where room downtime is so precious. A camera can be replaced in minutes with a single tool which is critical in environments such as mental health facilities. The new CMD4 has a whole different structure allowing fine adjustments to the camera angle of view once the main unit is installed. This optimises the whole process and enhances the final result for the client.

The CMD4 uses a 1/3" sensor in 4:3 screen ratio that delivers a superior level of all round room coverage. The analogue camera makes the CMD4 ideal for legacy applications replacing older technology without having to upgrade room infrastructure, an expensive and often impractical option.

Solutions for Lighting System Integration



We are able to manufacture all of the models in the CMD4 range in formats to match all existing lighting systems. This allows you to deliver state-of-the-art camera performance without compromise. Contact us for details.

The new enhanced audio system also delivers superb sound quality without having the traditional problem of a microphone aperture that can often be filled with dust and dirt.



Designed & Manufactured
In the United Kingdom

Technical Data

Technical	
Sensor	Sony Super HAD CCD (Effio A)
Resolution	750tvl
Wide Dynamic Range	Yes
Minimum Illumination (IR off)	Colour 0.2lux @ F1.2 Mono 0.05lux @ F1.2
Mechanical IR Cut Filter	Yes
Lens Angle	>90 degree horizontal
Power	12vdc
Power Consumption	200mA (maximum)
Lighting	940nm infrared
Audio	Yes

Physical	
Construction	Steel. Powder-coated Ral9010
	316 Stainless Steel (Option)
Mounting	Wall mounting frame and camera module
Environmental	IP65
Screen	Hard coat polycarbonate
Warranty	2 years



Designed and Manufactured In the UK by

ITS Products Limited

Unit 18 Tavis House Business Centre
Pegasus Way, Haddenham,
Buckinghamshire HP17 8ZD UK
T. 01865 818900 sales@its-products.co.uk



August 2020